

Steel Clad Aluminum Brake Rotor

Innovative Brake to Solve Pickup's Brake Warping Problem and Save Consumers \$\$\$\$

Advantages:

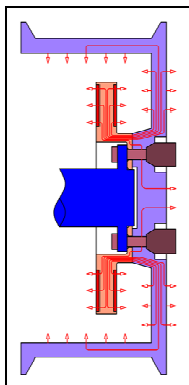
- 30% to 50% weight reduction
- Less brake pad drag
- Increase gas mileage about 3% on average
- Faster heat dissipation and lower braking temperatures
- Greater corrosion resistance
- No heat dissipation degradation due to rusting
- Approximately 30% less wear on brake pads
- Lasts over 10 years or 100,000 miles
- Shorter stopping distance
- Faster car acceleration
- More precise steering due to un-sprung weight reduction



LiteBrake Tech, LLC

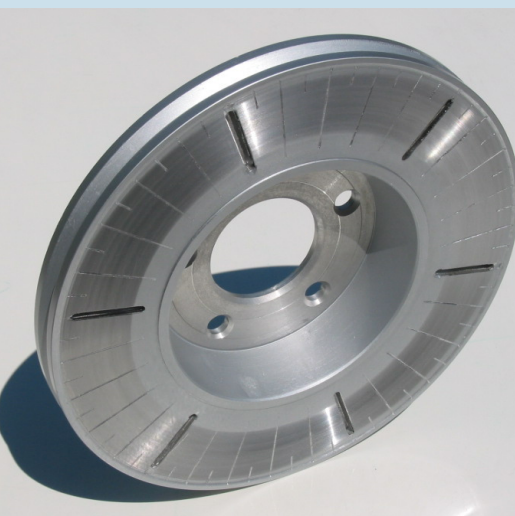
200 Michigan Street, Suite 438
Hancock, MI 49930
USA
www.litebrake.com

Phone: 906-369-0806
E-mail: sales@litebrake.com

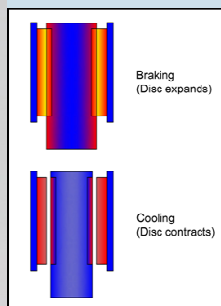


Uses connected aluminum rim as the brake heat sink and radiator to lower brake temperatures.

Incorporates a better steel with dozens of slots to increase the braking friction.



Utilizes the greater thermal expansion coefficient of aluminum to create a "force free pad return" -reducing pad drag and increasing gas mileage.



Because of great brake heat dissipation capability, the SCA rotors can assume pickup's heavy braking duty without warping. The installation of the SCA rotors could save you \$300 to \$500 rotor replacement cost and \$130 to \$220 pad replacement cost in ten years. The lighter rotating weight and pad drag reduction of the SCA rotor will further save you a few hundred dollars in gas expense every year.



Currently Available Rotors for:

- Ford Escape
- Mercury Mariner
- Chevrolet Equinox
- Saturn VUE
- Toyota Camry
- Toyota Prius
- Toyota Corolla
- Toyota Sienna
- Toyota Solara
- Toyota Avalon
- Lexus ES300
- Honda Accord
- Honda Civic
- Honda CR-V
- Honda Element
- Dodge Caravan
- Chrysler Town & Country

More coming soon!

Check www.litebrake.com for update information

Steel Clad Aluminum Brake Rotor

Innovative Brake to Solve Pickup's Brake Warping Problem and Save Consumers \$\$\$\$

Lighter rotation weight and less pad drag result in higher gas mileage.

Gas Mileage Tests*

Front Brakes	Test MPG	EPA MPG
2 cast iron rotors	21.0	22
2 SCA rotors	23.4	

* highway gas mileage, driven with full tanks of fuel to empty on a 2008 Ford Escape 4WD, 6 cyl, 3.0 L

Cast iron rotors retire earlier primarily due to rusting and excessive wear. SCA rotors minimize both.



Cast iron and SCA rotors after 4 years service



Wear comparison: top pad was worn against the SCA rotor and bottom pad was worn against a cast iron rotor simultaneously on different sides of a 1998 Ford Windstar van.

LiteBrake Tech, LLC

200 Michigan Street, Suite 438
Hancock, MI 49930
USA
www.litebrake.com

Phone: 906-369-0806
E-mail: sales@litebrake.com

Rotor Wear Comparison*

Rotor Type	Original Thickness	Final Thickness	Wear	Wear Reduction
Cast iron	1.030"	1.014"	0.016"	0
SCA	1.014"	1.003"	0.011"	31.3%

* After driving 42,800 miles

Pad Wear Comparison*

Pads	Original Thickness**	Final Average Thickness	Wear	Wear Reduction
Outboard against cast iron rotor	0.416"	0.09"	0.326"	0
Inboard against cast iron rotor	0.416"	0.05"	0.366"	0
Outboard against SCA rotor	0.416"	0.17"	0.246"	24.5%
Inboard against SCA rotor	0.416"	0.18"	0.236"	35.5%

* After driving 42,800 miles; ** excluding 0.252" thick steel backing plate.

SCA Rotor Consumer Cost Saving Estimate

Vehicle: 2008 Ford Escape 4WD, 3.0 L, 6 cyl, Regular Gasoline

Annual Fuel Cost with Cast Iron Rotors*	\$2,950	\$2,950	\$2,950
Gas Mileage Increase with SCA Rotors	1.5%	3%	5%
Annual Fuel Cost Saving	\$44	\$89	\$148
Front Pad Replacement Cost (high end)**	\$225	\$225	\$225
Front Pad Replacement Cost (low end)**	\$157	\$157	\$157
Labor (high end)***	\$107	\$107	\$107
Labor (low end)***	\$84	\$84	\$84
Pads (high end)***	\$111	\$111	\$111
Pads (low end)***	\$69	\$69	\$69
Tax on Parts	6%	6%	6%
Front Rotor Replacement Cost (high end)****	\$495	\$495	\$495
Front Rotor Replacement Cost (low end)****	\$333	\$333	\$333
Labor (high end)***	\$127	\$127	\$127
Labor (low end)***	\$99	\$99	\$99
Rotors + Pads (high end)***	\$347	\$347	\$347
Rotors + Pads (low end)***	\$221	\$221	\$221
Tax on Parts	6%	6%	6%
Total Ten Years Cost Saving (high end)	\$1,162	\$1,604	\$2,194
Total Ten Years Cost Saving (low end)	\$933	\$1,375	\$1,965
Initial SCA Brake Installation Cost (OEM)	\$300	\$300	\$300
Additional Labor	\$0	\$0	\$0
Rotors	\$260	\$260	\$260
Ceramic Pads	\$40	\$40	\$40
Net Ten Years Cost Saving (high end)	\$862	\$1,304	\$1,894
Net Ten Years Cost Saving (low end)	\$633	\$1,075	\$1,665

* based on the data for 2008 Ford Escape 4WD, 3.0 L, 6 cyl from <http://www.fueleconomy.gov/>

** assuming reduction of one time pad replacement in ten years due to the use of SCA rotors with 1/3 longer pad's life

*** based on the data for 2008 Ford Escape from <http://repairpal.com/>

**** assuming elimination of the rotor replacement need in ten years due to the use of SCA rotors with at least double life time